



MONTHLY MEMBERSHIP PROGRESS REPORT

District 3 L

Results as of: 4/30/2015

GMT: HAL GRIFFIN

LOCATION OKLAHOMA

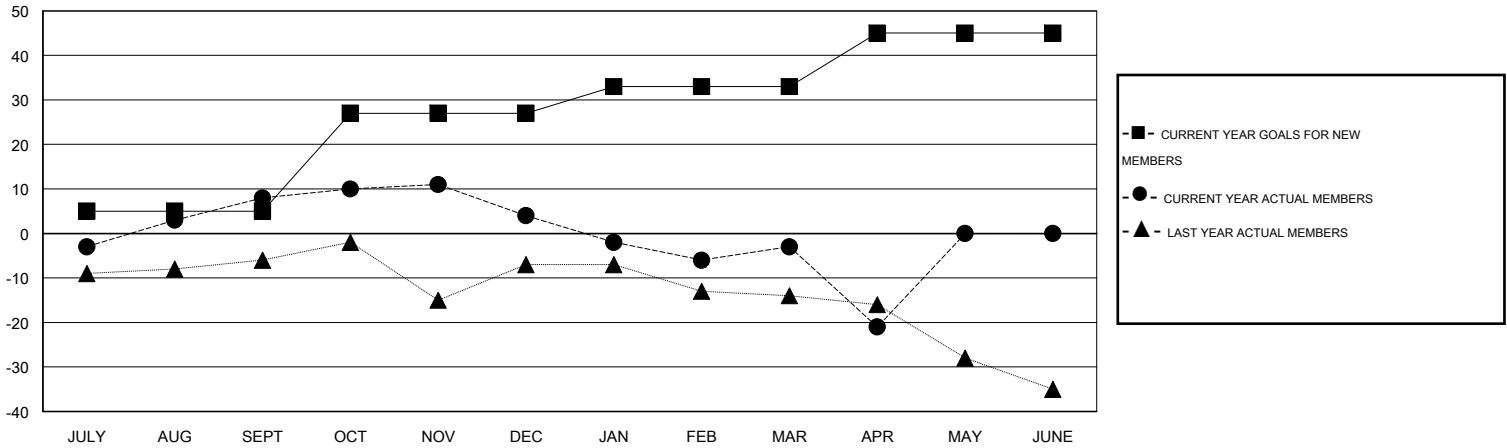
GMT CA 1

Clubs					Members				
RESULTS FOR 2014-2015					RESULTS FOR 2014-2015				
QUARTER	NEW CLUB GOAL	NEW CLUBS	DROPPED CLUBS	NET GAIN/LOSS	QUARTER	NEW MEMBER GOAL	CHARTER AND NEW MEMBERS ADDED	DROPPED MEMBERS	NET GAIN/LOSS
JULY/AUG/SEPT	0	0	0	0	JULY/AUG/SEPT	5	24	16	8
OCT/NOV/DEC	1	0	0	0	OCT/NOV/DEC	22	24	28	-4
JAN/FEB/MAR	0	0	0	0	JAN/FEB/MAR	6	18	25	-7
APR/MAY/JUNE	0	0	0	0	APR/MAY/JUNE	12	5	23	-18

GOALS AND ACTUAL NEW CLUBS CUMULATIVE



GOALS AND ACTUAL MEMBERS CUMULATIVE



DROPPED CLUBS: 0	27 CLUBS OF 36 ADDED 1 OR MORE NEW MEMBERS	<u>GENDER DISTRIBUTION</u>	
		MALE	527 (67.74%)
<u>DROPPED MEMBERS</u>	CLICK HERE FOR HEALTH ASSESSMENT DATA	FEMALE	251 (32.26%)
DECEASED		9	FAMILY UNIT MEMBERS
CLUB CANCELLED	0	HEAD OF HOUSEHOLD	56
OTHER	83	NON-HEAD OF HOUSEHOLD	57
TOTAL	92		